



# **Notes on Some Statistical Aspects of the Growth of Soka Gakkai in Italy**

*A paper presented at*  
**The CESNUR 2015 International Conference**

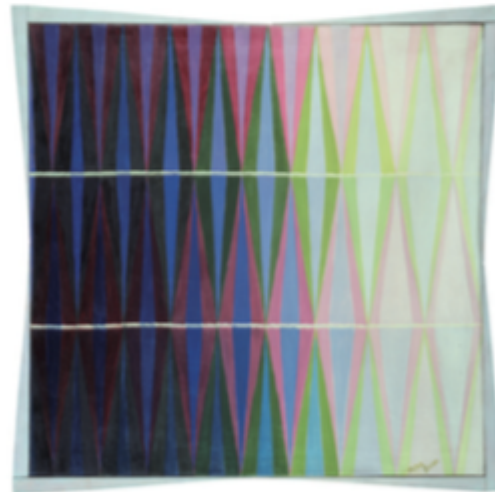
Tallinn (Estonia) / 17-20 June 2015 / Tallinn University

# *Enciclopedia delle religioni in Italia (2013)*

CESNUR  
Centro Studi sulle Nuove Religioni

Massimo Introvigne - PierLuigi Zoccatelli

## Enciclopedia delle religioni in Italia



# Online research project (cesnur.com)

## Le religioni in Italia

MASSIMO INTROVIGNE - PIERLUIGI ZOCCATELLI (SOTTO LA DIREZIONE DI)

Cerca



Last update June 11, 2015

Indice

## Le religioni in Italia

Un progetto a cura del [CESNUR](#) - Centro Studi sulle Nuove Religioni



Con il contributo della [Fondazione CRT](#)

FONDAZIONE CRT

# Italy 2013 — An overview

- Italian citizens = 55,961,764
- Italian resident population = 60,820,764
- Immigrants = 4,859,000 (8.0%)
- Religious minorities among Italian citizens = 1,417,000 (2.5%)
- Religious minorities including immigrants = 4,635,400 (7.6%)
- Religious and spiritual minorities = 836

# Religious minorities among Italian citizens

Jewish	36,000 (2.5%)	Buddhists	135,000 (9.5%)
Fringe and dissident Catholics	25,000 (1.8%)	Osho movements and similar	4,000 (0.3%)
Eastern Orthodox	110,000 (7.8%)	Sikh and Radhasoami	6,000 (0.4%)
Protestants	435,000 (30.7%)	Other groups of Eastern origin	2,000 (0.1%)
Jehovah's Witnesses (and similar)	415,000 (29.3%)	Japanese New Religions	3,000 (0.2%)
Church of Jesus Christ of LDS	25,000 (1.8%)	Esotericism / "Ancient Wisdom"	15,000 (1.1%)
Other groups of Christian origin	5,000 (0.4%)	Human Potential movements	30,000 (2.1%)
Islam	115,000 (8.1%)	New Age and Next Age	20,000 (1.4%)
Bahá'í and other from Islam	4,000 (0.3%)	Other	6,000 (0.4%)
Hinduists and Neo-Hinduists	26,000 (1.8%)	<b>Total</b>	<b>1,417,000 (100.0%)</b>

# Registered Constituent SGI Organizations

There are SGI members in 192 countries and territories, while there are 94 registered constituent SGI organizations.

**Africa:** Angola, Benin, Burkina Faso, Cameroon, Democratic Republic of the Congo, Côte d'Ivoire, Gabon, Ghana, Kenya, Liberia, Madagascar, Mauritius, Nigeria, Sierra Leone, South Africa, Togo, Zambia

**Asia:** Cambodia, Gulf (Emirate of Dubai), Hong Kong, India, Indonesia, Japan, Korea, Laos, Macao, Malaysia, Nepal, Philippines, Singapore, Sri Lanka, Taiwan, Thailand

**Europe:** Austria, Belgium, Bulgaria, Republic of Croatia, Czech Republic, Denmark, Finland, France, Germany, Greece, Hungary, Iceland, Ireland, Italy, Luxembourg, Netherlands, Norway, Poland, Portugal, Romania, Russia, Serbia, Slovenia, Spain, Sweden, Switzerland, United Kingdom

**Latin America:** Antigua & Barbuda, Argentina, Barbados, Belize, Bolivia, Brazil, Chile, Colombia, Costa Rica, Cuba, Dominican Republic, Ecuador, El Salvador, Guatemala, Haiti, Honduras, Jamaica, Mexico, Nicaragua, Panama, Paraguay, Peru, Puerto Rico, Trinidad & Tobago, Uruguay, Venezuela

**North America:** Canada, USA

**Oceania:** Australia, Federated States of Micronesia, New Caledonia, New Zealand, Northern Mariana Islands, Palau

# Members of SGI in 1995

Regions	Households	Members
Japan	8,120,000	
North America		338,000
Central America		12,000
South America		205,000
Asia and Oceania		779,000
Europe		19,000
Middle East and Africa		7,000
<b>TOTALS</b>	<b>8,120,000</b>	<b>1,360,000</b>

# Members of SGI in 2012





# Soka Gakkai in Japan in 2012

*8.27 million households*



# Soka Gakkai in Europe

Country	Registration / First Members / First Meetings	Country	Registration / First Members / First Meetings
Italy	1998 / 1961 / 1962	Poland	2004 / 1988 / 1992
France	2006 / 1961 / 1962	Iceland	2008 / 1979 / 1980
United Kingdom	1975 / 1965 / 1965	Greece	2003 / 1963 / late 70s
Germany	1969 / 1961 / 1962	Norway	1996 / 1962 / 1970
Spain	1983 / 1969 / 1970	Finland	2009 / 1975 / 1975
Netherlands	1982 / 1961 / 1967	Bulgaria	<i>not officially registered</i>
Switzerland	<i>not available</i>	Czech	<i>not officially registered</i>
Denmark	1988 / 1965 / 1969	Slovenia	2003 / 1983 / 1985
Belgium	1991 / 1964 / 1972	Hungary	2007 / 1991 / 1993
Austria	1989 / 1970 / 1972	Luxembourg	2001 / 1983 / 1984
Portugal	2009 / 1986 / 1987	Romania	<i>not officially registered</i>
Sweden	1981 / 1963 / 1964	Serbia	<i>not officially registered</i>
Ireland	<i>not officially registered</i>	Croatia	<i>not officially registered</i>
Russia	2010 / 1992 / 1992	Lithuania	<i>not officially registered</i>

# Members of SGI in Europe in 1997

Italy	19,000	Austria	250
France	8,500	Switzerland	250
United Kingdom	6,000	Sweden	250
Germany	2,000	Norway	60
Spain	500	Finland	50
Netherlands	500	Portugal	50
Belgium	300	Eastern Europe	100
Denmark	260	<b>TOTAL</b>	<b>38,070</b>

# Members of SGI in Europe in 2014

A quite accurate figure for Europe is near to **120,000 members**.

- Countries with membership ***below 300***: Croatia, Serbia, Romania, Luxembourg, Hungary, Slovenia, Czech, Bulgaria, Finland, Norway, Greece, Iceland
- Countries with membership ***300-600***: Poland, Russia, Ireland, Sweden
- Countries with membership ***700-2,000***: Portugal, Austria, Belgium, Denmark, Switzerland, Netherlands
- Countries with membership ***2,000-7,000***: Spain, Germany
- Countries with membership ***above 10,000***: United Kingdom
- Countries with membership ***above 15,000***: France
- Countries with membership ***above 50,000***: Italy

# The kaikan of the Soka Gakkai in Milano



# Members of the Soka Gakkai in Italy

Year	Men	Women	Young Men	Young Women	TOTAL
<b>2003</b>	7,229	15,020	3,526	6,101	<b>31,876</b>
<b>2004</b>	7,740	16,355	3,778	6,655	<b>34,528</b>
<b>2005</b>	8,927	19,062	4,370	7,747	<b>40,106</b>
<b>2006</b>	9,768	21,256	4,494	8,251	<b>43,769</b>
<b>2007</b>	10,596	23,315	4,558	8,556	<b>47,025</b>
<b>2008</b>	11,906	26,028	4,057	7,950	<b>49,941</b>
<b>2009</b>	12,630	27,914	4,140	8,342	<b>53,026</b>
<b>2010</b>	13,403	29,984	4,273	8,594	<b>56,254</b>
<b>2011</b>	14,263	32,162	4,561	9,118	<b>60,104</b>
<b>2012</b>	15,830	35,769	4,235	8,789	<b>64,623</b>
<b>2013</b>	17,093	38,990	4,414	8,922	<b>69,419</b>
<b>2014</b>	18,130	42,166	4,510	8,850	<b>73,656</b>
<b>2015 (May)</b>	18,566	43,158	4,591	9,125	<b>75,440</b>

# SGI in Italy — Members and Attendance

Year	Members	Attendance	Increase Members	Increase Attendance	% Attendance of Members
<b>2003</b>	30,342	18,745			61.8%
<b>2004</b>	32,630	17,237	7.5%	-8.0%	52.8%
<b>2005</b>	37,624	20,243	15.3%	17.4%	53.8%
<b>2006</b>	41,663	21,844	10.7%	7.9%	52.4%
<b>2007</b>	45,171	23,316	8.4%	6.7%	51.6%
<b>2008</b>	48,329	24,044	7.0%	3.1%	49.7%
<b>2009</b>	51,140	23,924	5.8%	-0.5%	46.8%
<b>2010</b>	54,312	25,477	6.2%	6.5%	46.9%
<b>2011</b>	57,757	26,482	6.3%	3.9%	45.9%
<b>2012</b>	61,905	27,768	7.2%	4.9%	44.9%
<b>2013</b>	66,648	29,233	7.7%	5.3%	43.9%
<b>2014</b>	71,286	30,475	7.0%	4.2%	42.8%
<b>2015</b>	75,488	31,728	5.9%	4.1%	42.0%